



Annual Report

2024

New data: impact in
Burundi & Zimbabwe

The extraordinary
momentum of
Dreaming Beyond

Walking with families
in Haiti & Ukraine



Table of contents

- From the president & CEO** 02
- About HOPE**
 - Why we serve 04
 - How we serve 06
 - Where we serve 08
- Our work**
 - Savings groups 10
 - Microfinance institutions 12
- Jovelee’s story: leaving the landfill behind** 14
- Dreaming Beyond Our Boundaries** 16
- Challenges in 2024** 20
- Investing in HOPE’s mission**
 - Team & leadership 22
 - Supporters 24
- Stewardship**
 - Program funding 26
 - Financials 28



Sebastian (second from left), with other members of his savings group for youth PERU (Comas CMA Church)



MISSION

To invest in the dreams of families in the world’s underserved communities as we proclaim and live the Gospel.



METHOD

We share the hope of Christ as we provide biblically based training, savings services, and loans that restore dignity and break the cycle of poverty.



MOTIVATION

The love of Jesus Christ motivates us to identify with those living in poverty and be His hands and feet as we strive to glorify God.

Two generations inspired by Christ, saving for the future

For years, Vilda Fretel Asencios (on the cover, with her children) and other moms in her community have prayed, supported one another, and saved money as members of *Inspiradas por Cristo* (“inspired by Christ”) savings group. Realizing the benefits, Vilda and her neighbors asked Comas CMA Church, HOPE International’s partner in Peru, to **start another group—this time for their teenage children**. At first, Vilda’s son, Sebastian (on the

cover & above), resisted both saving and God. But a church volunteer guiding the new group didn’t give up, mentoring and sharing Jesus’ love with him and the other teens. On December 10, 2023, **Sebastian and every member of the group gave their lives to Christ**. Today, Sebastian is saving for the first time, doing chores to earn money, and dreaming of attending college. He says, “I want to create something that makes history.”

Unless otherwise noted, HOPE statistics are as of December 2024 (based on information reported in March 2025) and may be subject to adjustment. Some statistics include self-reported data from HOPE’s partners. Total portfolio and savings numbers reflect currency exchange rates as of December 31, 2024. All Scripture quotations, unless otherwise indicated, are taken from the Holy Bible, New International Version®, NIV®. Copyright ©1973, 1978, 1984, 2011 by Biblica, Inc.™ Used by permission of Zondervan. All rights reserved worldwide. Feature photography is courtesy of Brittany Eberly (cover, 1), 2025 CCT Group Communications (3, 14–15), Javier & Carlos (7), Steve Mathambo Ngoma (10–11), Kingdom Photography (12–13), Paul Lameck Daudi/Chizoo Studios (16), and Nelz Photography (26–27). We thank these gifted artists for sharing their work with us!

FROM THE PRESIDENT & CEO

More momentum than ever

When I met Jovelee Maala at one of the 43 coffee shops she's opened in the Philippines, I saw firsthand the dramatic impact of her faith, courage, and generosity.

Since connecting with the Center for Community Transformation, HOPE International's partner in the Philippines, Jovelee and her family have started several thriving enterprises. As you'll read on p. 14–15, these businesses have energized the local economy and created jobs. And they've allowed Jovelee and her husband to provide for their children and help their church grow.

During my time with Jovelee, I was struck by God's work in the lives of those we serve. He didn't just stabilize Jovelee's finances; He gave her daily opportunities to share His love with neighbors visiting her shops. He didn't just change Jovelee's outlook; He used her example to inspire others in her community to employ their own God-given abilities. He didn't just work in Jovelee's heart; He used her transformation to bring her entire family to new life in Christ.

At HOPE, we witnessed more growth, more momentum, and more impact in 2024 than ever before:

- ▶ **New data from Burundi and Zimbabwe shows how those we serve are growing in faith, providing for their families, and feeling more hopeful about the future.**
(Read more on pages 10–13.)
- ▶ **Through our Dreaming Beyond vision, we reached five more underserved communities, implemented seven new innovations, and established 17 more partnerships.**
(Read more on pages 16–19.)
- ▶ **We saw God's abundant mercy surround families and multiply our efforts in communities facing crisis in Haiti and Ukraine.**
(Read more on pages 20–21.)

Thank you for helping to advance HOPE's mission, offering your prayers, financial support, and partnership to invest in the dreams of men and women like Jovelee.

Knowing the work that's before us, we continue to fix our eyes on Christ, praying, "your kingdom come, your will be done, on earth as it is in heaven" (Matthew 6:10).

With gratitude and hope,



Peter Greer
President & CEO

“
Your kingdom come, your will be done, on earth as it is in heaven.

MATTHEW 6:10

Peter & Jovelee at one of her coffee shops
PHILIPPINES
(Center for Community Transformation)



Why we invest in dreams

God breathed dignity and dreams into humanity.

In the beginning, God designed each and every person in His image, with the ability to create, work, and dream of what could be.

People who live in poverty have beautiful dreams for themselves, their families, and their communities. What's more, they possess the God-given gifts and passions needed to make those dreams a reality.

Poverty isn't part of God's good design.

Poverty stifles dreams with obstacles like:



Isolation & loneliness



Feeling separated from God



Hunger



Lack of education



Predatory lending & loan sharks



No savings to pay for emergencies

TODAY, NEARLY 700 MILLION* PEOPLE LIVE IN EXTREME POVERTY AND FACE BARRIERS TO THEIR DREAMS.

*World Bank

God is restoring people and reviving dreams.

As men and women access Christ-centered financial services through HOPE International and our partners, they're empowered to provide for their families and serve their communities.



EVENESS MULUNGU

MALAWI

Eveness' family used to eat maize bran (animal feed) to survive. Now, neighbors call her household *mwana alilenji*, "a home that lacks nothing."



DAMOCLES BERNARD

DOMINICAN REPUBLIC

Damocles hoped to rebuild his business after a flood destroyed it. Today, he's the proud owner of a busy tailor shop.



BLANCHE BANLOUNGASSAMIO

REPUBLIC OF CONGO

Blanche wanted to expand her health products business to serve others. Now, she uses her increased profits to house and care for children with disabilities in her community.



VALENTINA RABDAU

MOLDOVA

Valentina had to move to Italy to find work but dreamed of returning home. Today, she's back in Moldova, reunited with her young daughter and running two grocery stores.

Christ at the center

We serve families through four core services:

DISCIPLESHIP

Through everyday interactions, staff members and volunteers share the Gospel, facilitate Bible studies, and invite those we serve to fully follow Jesus Christ.

TRAINING

The HOPE network offers biblically based training, mentoring, and coaching on topics from personal finance to regenerative agriculture.

LOANS

With capital from HOPE and our partners, entrepreneurs can launch businesses or expand them by buying supplies in bulk, diversifying inventory, or investing in improvements.

SAVINGS

With a safe place to save, families can stabilize household income, build up emergency funds, start or grow businesses, or pay for large expenses like school fees.



And we rely on God to bring lasting transformation.

Following her husband's death, Patiurka de la Cruz fell into debt trying to provide for her four children. But after connecting with Esperanza, HOPE's microfinance institution in the Dominican Republic, Patiurka experienced new life in Christ and found the support she needed to work her way out of debt and provide for her family.

We celebrate how men and women like Patiurka are finding release from poverty—in all its forms. She says:

SPIRITUAL

"Before, I didn't read the Bible [or] pray. But with Esperanza, I've learned to read the Bible, to get closer to God."

SOCIAL

"When my husband died, the loan officer came along with my friend. They prayed for me. ... I felt like I had a family—that I wasn't alone."

MATERIAL

"Thanks to God, I am in a better house. ... [My children] attend school. My family's quality of life has improved a lot—so much."

PERSONAL

"I was able to get out of ... my old state of life. And now, thanks to God, I'm an example in my neighborhood."

We offer these services through three approaches:



SAVINGS GROUPS

HOPE trains churches and other Christ-centered organizations to launch savings group programs in their communities. In savings groups, members meet to pray, study Scripture, offer mutual support, save money, and make small loans to each other.



MICROFINANCE INSTITUTIONS

HOPE manages or partners with other Christ-centered financial institutions to offer discipleship, training, loans, and savings services to people starting or growing their businesses.

SMALL-AND-MEDIUM-ENTERPRISE LENDING

HOPE and our microfinance partners equip entrepreneurs with larger loans and additional training to scale their businesses. These businesses meet local needs, create jobs, and boost the economy.



Patiurka de la Cruz
Owns a *colmado* (convenience store)
DOMINICAN REPUBLIC

A collective approach to investing in dreams

The HOPE International network comprises savings group programs and microfinance institutions. HOPE leads some of these and our partners lead others—but we all share one Christ-centered calling: to reach families living in poverty with financial tools and the Gospel.



Investing in dreams for 27 years



3.3M
PEOPLE SERVED



16,516
CHURCHES EQUIPPED



\$1.82B
IN LOANS DISBURSED



Sergiu, Moldova

Divya, South Asia*

Alain, Republic of Congo

Alice, Paraguay

Lina, Philippines

How savings groups make a difference for families



Tafadzwa Gutu, with his daughters
Carpenter
ZIMBABWE

The impact of Miracle savings group

For years, Tafadzwa and Jocelyne Gutu, along with their two daughters, lived in a half-built house in Harare, Zimbabwe. Tafadzwa, a skilled carpenter, was constructing their home but couldn't get enough business as a carpenter to afford the materials he needed. Both Tafadzwa and his wife are deaf, so his clientele was limited to those who knew sign language. **The couple struggled to cover the family's food, medical bills, and school fees—and the home remained unfinished.**

In 2023, a local church invited Tafadzwa and other neighbors with speech or hearing disabilities to join a savings group called Miracle.

A HOME FOR HIS FAMILY

With loans from the group, Tafadzwa purchased electrical tools and bulk materials for his carpentry business, leading to quicker work and higher profits. Now, the family can afford food and clothing. He also bought bricks, stones, and cement to finish their house!



85%

of surveyed HOPE savings group members in Zimbabwe have **accessed loans** through their group—while only 21% of those in a comparison group have accessed a loan from any source.

RESPONDING TO THE GOOD NEWS

By studying Scripture with other Miracle savings group members, Tafadzwa came to know Christ. He and his family now attend a local church.

89%

of surveyed HOPE savings group members in Zimbabwe say that another person is helping them grow in their **relationship with God**.



STRONGER RELATIONSHIPS

Before, Tafadzwa didn't get along with his neighbor—but being in the same savings group brought them together. Today, this neighbor helps translate when Tafadzwa is buying materials.

2x as many surveyed HOPE savings group members in Zimbabwe report that **trust has improved** between members of their community, compared to those in a comparison group.



2024



+2,836

new churches equipped across the HOPE network

Cumulatively, HOPE and our partners have empowered 16,516 churches to bring savings groups to their community.



+184,608

new members joined across the HOPE network

Since HOPE's inception, 1,984,174 members have formed 112,235 groups to study Scripture, pray, and save together.



\$31.95

average savings per member in HOPE programs

Members used savings to invest in businesses, cover large expenses, and prepare for emergencies.

How microfinance institutions work for families



2024

| | | |
|---|--|--|
|  +88,067 new people served HOPE's network of microfinance institutions was actively serving 316,554 people in December. |  \$126,236,144 disbursed in loans Entrepreneurs accessed capital to invest in businesses, provide for their families, and serve their communities. |  98% repayment rate (2019–2023) As entrepreneurs pay back their loans, microfinance institutions recycle those payments to serve even more families. |
|---|--|--|

Pierre Minani, with his family
Owns a taxi business, shop, & farm
BURUNDI

From a dead end to a new path

Ten years ago, Pierre Minani was smuggling food out of Burundi to sell it illegally—and he was in crisis. Pierre shares, “I would work, but I wouldn’t save anything for my family, only spending all the money I earned in bars.” Eventually, he says the consequences caught up with him: **“I ended up being jailed and lost everything.”**

Once released, Pierre needed a fresh start. That’s when he joined a microfinance group through Turame Community Finance, HOPE’s microfinance institution in Burundi.

REACHING THE UNDERSERVED

Turame was the only financial institution in Pierre’s community offering loans to people living in poverty. With a \$52 (U.S.) loan, Pierre bought a motorcycle and started a taxi business.

92% of entrepreneurs surveyed say their loan from Turame is the **first** they’ve ever accessed.

SPIRITUAL BREAKTHROUGH

Pierre started following Christ, reflecting, “I am very grateful to the Lord God, who made it possible for me to join Turame and know His Word, ... which changed my life completely from a fraud and a drunkard to a man impacting my community.”

84% share they’ve changed something about how they live due to **hearing and discussing Scripture** through Turame.

MATERIAL IMPACT

As his taxi business did well, Pierre used additional loans to start farming and open a shop with his wife. The couple built a home for their family. “For sure our life has changed,” he says.

96% report that their **business income** has increased due to working with Turame.

REPAIRED RELATIONSHIPS

Pierre’s early decisions broke trust—but Christ has brought reconciliation. He relates, “After Turame meetings, I share [Bible] verses with my wife and my children, which restored my relationship with my family and neighbors.”

85% share that **trust** has grown in their microfinance group.

A RIPPLE EFFECT

When entrepreneurs have access to the resources they need, entire communities benefit. Today, Pierre employs eight of his neighbors and has trained over 300 in entrepreneurship skills.

41% say they’ve increased their number of **paid employees**.

Data is from a 2024 HOPE Quotient survey conducted by HOPE and 60 Decibels, a third-party social impact measurement company.

“

We still talk about how grateful we are that God found us.



Jovelee Maala
Owns coffee shops
PHILIPPINES (Center for
Community Transformation)

Leaving the landfill behind

Jovelee Maala was born and raised in the heart of the Philippines’ largest open dumpsite, the Payatas landfill in Quezon City. Growing up, she watched neighbors comb through the mountains of trash for items to resell—and when she turned 18, she joined them.

In 2003, Jovelee decided to open a store selling the things she and others found. She named it Ryan and Daday Junkshop, in honor of her husband and their children.

But the work was taxing, the inventory unpredictable, and the sales unreliable. Running the store took a toll on their family.

“Our life used to be all about the junkshop business,” she says. “We’d leave the house while the kids were still sleeping; we’d return home when they’d already be asleep.”

A WAY FORWARD

Jovelee was searching for solutions when a shop employee told her about a group he’d joined. In it, members accessed business capital and learned how to save through the Center for Community Transformation (CCT), HOPE’s partner in the Philippines. After a year of convincing, she attended a meeting.

Jovelee says she felt shy, but what she heard about Jesus kept her coming back. In time, she gave her life to Christ—along with her entire family. “We still talk about how grateful we are that God found us and that we joined the church,” she shares.

Jovelee also started putting aside \$1.81 (U.S.) weekly, and in 2007, she took her first loan (\$72 U.S.) from CCT to expand her store. With subsequent loans, she opened two more locations.

Then crisis hit: A deadly landslide occurred at Payatas, prompting leaders to shut it down. “When the government closed the dumpsite, I also had to close one of my junkshops,” Jovelee recalls. “But God is so good because He replaced it with something bigger—we turned the place into a church.”

TENACIOUS JOY

Jovelee faced new challenges in 2020, when her shops shut down during the pandemic. She says she relied on the Lord and tapped into the years of business training she’d received to come up with another plan: “[CCT taught us] how to handle our business, how to engage with key people, how to pick the right location—I was able to use all of those learnings.”

Jovelee took a leap of faith and launched a new business: a coffee shop. It was a success! With additional loans from CCT, she’s expanded to an astounding 43 locations in the last five years.




Jovelee & her husband in front of their home

Since 2003, Jovelee has provided employment to nearly 100 people. She and her husband sent their three children to school and built a house. They’ve also funded building projects and outreach initiatives through their church.

Yet for Jovelee, it all comes back to Christ: “I always thank the Lord that because of certain people, and through an organization, my entire family was saved.”

JOVELEE’S COFFEE SHOPS

 in 2020  2021–2024



That’s an average of 8.6 new stores each year!

DREAMING BEYOND our boundaries

From 2021–2025, we’re boldly scaling HOPE International’s mission to invest in the dreams of even more families. Dreaming Beyond Our Boundaries is about trusting a God who can do more than we think possible. And it’s about empowering people who have yet-to-be-realized

dreams, entrepreneurs with overlooked potential, and communities ready for transformation.

We celebrate God’s work in 2024, bringing growth to three areas of priority: frontiers, innovation, and partnership.



Members of the Maasai tribe who have formed *Osiligi Ng’ejuk* (“new hope”) savings group
TANZANIA

“

Glory to God, who is able to do far beyond all that we could ask or imagine by his power at work within us.

Ephesians 3:20 (CEB)

Frontiers



We’ll expand our boundaries to serve the least served.



Yoselin Ambrocio Aldaves
Owns a small shop
PERU (Comas CMA Church)

Serving displaced families in Peru

Between 1980–2000, indigenous families displaced from Peru’s interior by violence and government mandates fled to the hills of Comas, outside the capital city of Lima. With no other options, they built homes—often without running water or electricity—on empty plots of land. Today, those living in Comas still experience overcrowding, unstable housing, and unemployment. **As members of indigenous groups, many face discrimination and haven’t heard the Gospel.**

But God is using HOPE and Comas CMA Church, HOPE’s partner in Peru, to write a new story. In 25 savings groups, people in Comas are finding community, learning of God’s love, and dreaming for their future.

Aware of the elevated risks their children face, one savings group of mothers shared a dream of reaching their teenagers with the Gospel and with skills like saving. In response, the church launched a savings group for teens in Comas. (Meet one member of the group for youth on p. 1!)

SINCE 2021, WE’VE REACHED 23 FRONTIER COMMUNITIES, INCLUDING:

- ▶ Mayan communities in Guatemala
- ▶ Women in South Asia* whose husbands were killed or disabled in war
- ▶ South Sudanese refugees in Uganda
- ▶ Isolated Maasai communities in Tanzania

*Country name withheld for security

“

I want to create ... a little market and to build [my home] with concrete. Once I achieve my goal, I’ll feel at peace because I know that in the future, my children will study.

Yoselin Ambrocio Aldaves, member of *Las Triunfadoras* (“the triumphant ones”) savings group

Innovation



We'll listen and find new ways to respond to those we serve.



Partnership



We'll strengthen our Kingdom-minded network while expanding collaboration.



Shifting to reach taxi drivers

In Tanzania, *boda boda* ("motorcycle") drivers provide an essential service: transporting people and goods by motorbike. But with most drivers being young and untrained, serious accidents are frequent. And drivers have a reputation for engaging in risky behavior, like driving while intoxicated or without a license. Very few are part of a church.

In 2024, our church partners began ministering to this group, with the HOPE Tanzania team developing a host of creative innovations to make savings groups relevant to drivers' specific needs. So far, five pilot groups have launched, with church facilitators

providing discipleship, as well as training on topics like road safety. During a special commissioning service, group members received Bibles, reflective vests, and helmets. They also heard from a doctor, who's tended to many victims of motorcycle accidents at a local hospital, and a police officer, who explained how to obtain a license.

"Most people in Tanzania know a driver who has died or lost a limb from an accident," notes Anna Makundi, country director of HOPE Tanzania. "Nobody was doing much to help these young people—but we're changing that. We pray they'll know of Christ's love for them, feel our care, and save for their futures."

SINCE 2021, WE'VE LAUNCHED 39 INNOVATIONS, INCLUDING:

- ▶ Loans designed around the growing season of coffee farmers in Burundi
- ▶ Training in trade skills for 200+ single mothers in savings groups in Rwanda
- ▶ Sustainable farming practices for savings group members in Malawi
- ▶ Housing improvement loans for Ukrainians



Boda boda ("motorcycle") drivers who've joined savings groups
TANZANIA

Accelerating services in Guatemala

Around the world, Christ-centered microfinance institutions faithfully serve their communities, but many are under-resourced. We're looking to equip and encourage these organizations by offering coaching and small grants through our Microfinance Accelerator Program (MAP). **In 2024, seven new organizations—based in countries including Guatemala, Indonesia, Mexico, and Uganda—joined the accelerator.**

Fundación de Asistencia para la Pequeña Empresa (FAPE) serves in Guatemala, where children and members of indigenous communities are especially vulnerable to discrimination and poverty. By joining MAP to access mentoring and other resources from HOPE, FAPE plans to expand their reach by 40% over the next five years, serving even more families like Paula's.



Paula used a loan from FAPE to grow her flower business and start selling indigenous clothing. Now, Paula can pay the fees to keep her daughter in school. She dreams her daughter will one day earn a college degree.



SINCE 2021, WE'VE FORMED 47 PARTNERSHIPS, INCLUDING WITH:

- ▶ Our first two church partners with HOPE Benin in West Africa
- ▶ Compassion International to form savings groups in Honduras
- ▶ An organization in Indonesia offering financial services to Christians displaced by persecution
- ▶ The Dioceses of Kitgum & Northern Uganda to serve families affected by decades of war & instability

Rising to meet challenges

HOPE serves in communities where high levels of poverty, security risks, or opposition to the Gospel—and sometimes, all three—exist. Yet we know God is present and calls us to respond.

In 2024, we were honored to walk with colleagues, partners, and families carrying heavy burdens, especially in Haiti and Ukraine.

Haiti: four years of intense hardship

The World Bank identified 2021–2024 as a period of “multidimensional crises” in Haiti. Political turmoil, natural disasters, violence, and economic instability make everyday life extremely challenging for Haitian families.

Working hand-in-hand with our partners, we’ve equipped more local churches to start savings groups among underserved people, including those with disabilities and in rural areas. And in response to requests, we piloted trainings to resource savings group members in sustainable farming practices.

CHALLENGES

- ▶ 48% of Haitians experiencing acute hunger*
- ▶ 700,000 Haitians displaced by violence*

OUR RESPONSE

Since 2009, HOPE Haiti and our partners have:

- ▶ Equipped 1,002 churches
- ▶ Served 56,344 savings group members

*World Food Programme



“We saw the vast majority of savings groups continuing to meet in 2024. Lives are changing and **groups are thriving**, even in the most difficult times.

Ricot St. Paulin, country director, HOPE Haiti

Aravena Julien, a single mother in Haiti, used savings and a loan from her group to expand her bread business and resume building a home. “I can’t express enough gratitude to God and to the group He placed me in for giving me hope for the future,” she says.



Serhii
Farmer
UKRAINE



Ukraine: serving in a war zone

Since the full-scale invasion of Ukraine in February 2022, life has been unpredictable and precarious for Ukrainian families. The war has created nationwide social and economic instability, on top of daily threats of missile strikes and power and water supply disruptions.

But HOPE Ukraine team members’ and church partners’ commitment to serve hasn’t wavered—in fact, their resolve has redoubled.

Our microfinance team has created new loan products to serve entrepreneurs during wartime, more than doubling HOPE Ukraine’s loan portfolio. And our church partners have mobilized to care for internally displaced people (IDPs) by forming savings groups. Group members meet to encourage and pray for one another, and they’ve used their savings to serve others—like purchasing tablets for local children with hearing disabilities and paying members’ medical bills.



“No place in Ukraine is truly safe, yet our team remains resilient, continuing to serve our clients and support the local economy.

Andriy Kopyl, managing director, HOPE Ukraine

CHALLENGES

- ▶ 13% national unemployment*
- ▶ 5 million internally displaced people (IDPs)**

OUR RESPONSE

Since February 2022, HOPE Ukraine and our partners have:

- ▶ Disbursed loans to 389 entrepreneurs
- ▶ Served 500+ IDPs through savings groups
- ▶ Helped create & sustain jobs for 1,470 people

*International Monetary Fund
**United Nations Refugee Agency

“

We wait in hope for the Lord; he is our help and our shield.

Psalm 33:20

Serving the Lord at HOPE

Each person on the HOPE team has personally experienced Christ's transforming love—and that's what inspires our work. Three of our newest team members share more:



JAMES MBONYABUCYA

Cybersecurity analyst
RWANDA

"I love the collaborative and supportive environment at HOPE. The organization really values its people and encourages a culture of continuous learning."



BRENDA LISSETTE RIVAS

Regional director of savings groups in Latin America & the Caribbean
EL SALVADOR

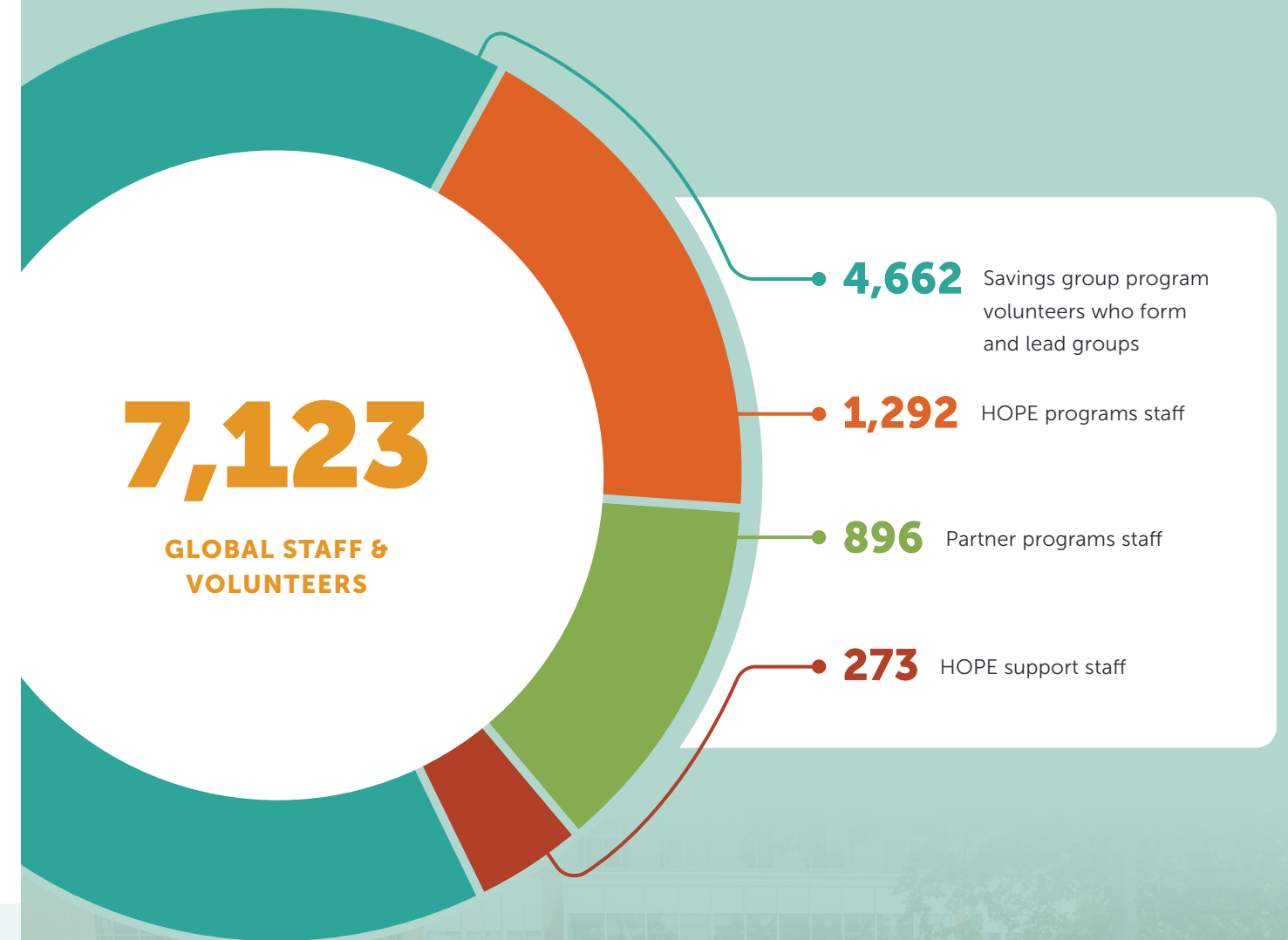
"God's heart is with those who are excluded, overlooked, marginalized, and vulnerable. Serving at HOPE allows me to be close to the heartbeat of God."



ANGEL RUTLEDGE

Director of spiritual integration
UNITED STATES

"I'd been praying about how to combine my recent seminary degree with my entrepreneurial experience and global missions background. Joining HOPE's staff was God's answer."



Leadership

2024 EXECUTIVE COUNCIL

- Peter Greer**, president & CEO
- Jesse Casler**, chief operating officer
- Claire Brosius**, chief of staff
- Micah Crist**, senior director of microfinance
- Becky Svendsen Harbaugh**, director of marketing
- Lesly Jules**, savings group regional director
- Gideon Maniragaba**, Africa associate regional director
- Becky Miller**, senior director of technology
- Moses Ndahiro**, senior director of savings group programs
- Erika Quaile**, vice president of advancement
- Diane Uwamahoro**, country director, HOPE Rwanda
- Rachel Spier Weaver**, senior director of human resources
- Dan Williams**, vice president of integrated strategy

2024 BOARD OF DIRECTORS

- Jeff Rutt**, founder & board chair, HOPE International; founder & CEO, Keystone Custom Homes
- Dabbs Cavin**, CEO & board member, Mountaire Corporation
- Alisa Hooper**, partner, Generations of Hope LLC
- Cathi Linch**, executive vice president, MidFirst Bank
- Deena Morgan**, senior vice president of business development, CenTrio Energy
- Melody Murray**, partner for global community, Praxis
- Rev. Isaie Ndayizeye**, senior pastor & overseer, Pentecostal Church of Rwanda
- Josh Ruyle**, CEO, Image Pointe & Dignity Apparel
- Lance Wood**, area director in Orange County, CA, National Christian Foundation
- Joanne Youn**, former executive vice president & general counsel, TrustBridge Global



2024 Leadership Summit attendees

HOPE SUPPORTERS

Generosity that catalyzes global change

5,142
SUPPORTERS

God fueled HOPE's mission in 2024 through the prayers and gifts of people around the world.

4,000+
PRAYER PARTNERS

1,159

DREAM INVESTORS

Monthly supporters came alongside underserved families and helped HOPE steward funds wisely. Learn more at dreaminvestor.org.

178

BUSINESS PARTNERS

By giving a portion of their profits to HOPE or to sponsor HOPE events, local businesses empower global entrepreneurs.

74

CHURCH PARTNERS

Churches in Hong Kong and the U.S. extend their ministry by equipping the global Church through HOPE.

79

HOMES FOR HOPE PARTNERS

Homes for HOPE connects the building industry to the work of HOPE.

38

HGI INVESTORS

Through HOPE Global Investments (HGI), accredited investors lend money to support the growth of microfinance institutions.

\$40.4 MILLION

FUNDRAISING REVENUE

We're humbled by how generously supporters invested in the families HOPE served in 2024. **Thank you!**



Rob & Emily Angle, with their grandchildren

Leaving a Kingdom legacy

In 2020, God laid James 1:27's call to care for widows and orphans on the hearts of Emily and Rob Angle. Emily joined a ministry at their church for women who'd lost their spouses, and Rob researched organizations working to alleviate global poverty. "HOPE just hit all the things we care about," he says.

Over the years, the Angles have prayed for HOPE, opened their home to share about HOPE's mission with others, and given financially. Their wholehearted response to God's call also prompted them to craft a legacy giving plan that includes HOPE and other groups near to their heart.

But recently, Rob sensed God inviting him to go further. As an attorney, Rob has helped people manage their wills and estates for 38 years. In October 2024, Rob cut his working hours in half to offer his time and advice to families making decisions about their estates, free of charge.

"Legacy giving is a statement of what's a priority in your life and an opportunity to give back a little to God's blessing," he says, "I want to provide resources and availability to help folks on their journey."

To explore your estate plans, contact Rob at rob@angleperryisley.com.

Savings group member for a day

For those with ready access to financial services, savings groups are usually a new concept. What exactly is a savings group, and what's it like to be part of one?

In 2024, more than 200 small groups, churches, and organizations explored those questions through the **Discovering HOPE Experience**. Stepping into the stories of real men and women served by HOPE, participants engaged with the challenges poverty presents—and heard how savings groups offer opportunities to partner with God in His work of restoration.

“*The Discovering HOPE Experience gave us a deeper understanding of what people in savings groups are going through and how much even 12 cents can mean to someone. It was extremely impactful—and also so much fun!*”

Jillian Oakes, Life.Church Northland (far right)

Learn how to bring the Discovering HOPE Experience to your church or small group on the back cover of this report.



Pastors & staff from Life.Church campuses in the Kansas City area participate in the Discovering HOPE Experience

Stewardship that reflects our values

85.2%

PROGRAMS

In 2024, about 85 cents of every dollar given to HOPE International went to support men and women through Christ-centered financial tools and sharing the Gospel.

7.9%

GENERAL & ADMINISTRATIVE

6.8%

FUNDRAISING

“
Seek the Kingdom of God above all else.

Matthew 6:33a (NLT)

Financials

Consolidated schedule of activities

For years ended on December 31, 2024, and December 31, 2023

| SUPPORT & REVENUE | 2024 | 2023 | \$ Change | % Change |
|---|----------------------|----------------------|----------------------|------------|
| SUPPORT | | | | |
| Family foundations | \$ 22,353,496 | \$ 22,689,257 | \$ (335,761) | -1% |
| Individuals | 7,766,912 | 5,165,442 | 2,601,470 | 50% |
| Businesses ^(A) | 6,177,190 | 3,894,251 | 2,282,939 | 59% |
| Churches | 1,725,376 | 1,111,135 | 614,241 | 55% |
| Special event revenue net of expenses | 2,340,066 | 2,234,736 | 105,330 | 5% |
| Gifts in kind | 62,976 | 52,686 | 10,290 | 20% |
| Government | - | - | - | - |
| TOTAL SUPPORT | 40,426,016 | 35,147,507 | 5,278,509 | 15% |
| REVENUE | | | | |
| Income from microfinance institutions & interest income on investments ^(B) | 19,529,973 | 14,465,795 | 5,064,178 | 35% |
| Foreign currency translation gain (loss) | (738,692) | (1,819,001) | 1,080,309 | 59% |
| Other income (loss) | 721,515 | 807,136 | (85,621) | -11% |
| TOTAL SUPPORT & REVENUE | \$ 59,938,812 | \$ 48,601,437 | \$ 11,337,375 | 23% |
| EXPENSES & PROGRAM INVESTMENTS | | | | |
| Program services & investments ^(C) | 48,863,701 | 38,966,775 | 9,896,926 | 25% |
| General & administrative | 4,553,135 | 4,277,811 | 275,324 | 6% |
| Fundraising | 3,905,483 | 3,814,043 | 91,440 | 2% |
| TOTAL EXPENSES & PROGRAM INVESTMENTS | \$ 57,322,319 | \$ 47,058,629 | \$ 10,263,690 | 22% |
| NET OPERATING INCOME | | | | |
| Additions of net assets at the time of consolidation of Esperanza & SMEP Microfinance Bank ^(D) | - | 6,687,211 | | |
| Total change in net assets | 2,616,493 | 8,230,019 | | |

^(A) Business support was higher in 2024 largely due to increased donations from Homes for HOPE, which gave two years' worth of donations in 2024.

^(B) Increase in 2024 is from investment gains and microfinance income as SMEP Microfinance Bank and Esperanza, HOPE's microfinance institutions in Kenya and the Dominican Republic, respectively, were included for only a partial year in 2023 but the full year in 2024.

^(C) Program expenses increased in 2024 largely because SMEP and Esperanza were included for only a partial year in 2023 but the full year in 2024.

^(D) In 2023, HOPE acquired 51% ownership of SMEP and entered a new leadership agreement with Esperanza. This number represents the assets of both entities at the time of consolidation.

Consolidated schedule of financial position

For years ended on December 31, 2024, and December 31, 2023

| ASSETS | 2024 | 2023 |
|---|-----------------------|-----------------------|
| U.S. cash & cash equivalents | \$ 3,633,824 | \$ 1,937,054 |
| Field cash & cash equivalents | 8,973,282 | 7,536,527 |
| Field cash & cash equivalents (restricted for client savings) | 3,722,966 | 3,356,096 |
| Prepaid expenses, loans receivable, & other assets ^(E) | 14,667,896 | 8,771,782 |
| Interest receivable | 1,742,614 | 2,357,342 |
| Microfinance institution loans receivable, net ^(F) | 42,575,855 | 40,202,359 |
| TOTAL CURRENT ASSETS | \$ 75,316,437 | \$ 64,161,160 |
| Endowment & board-designated reserve | 11,484,647 | 9,741,982 |
| Property & equipment (net of accumulated depreciation) | 11,027,170 | 9,965,317 |
| Long-term loans receivable, net | 4,294,763 | 2,626,167 |
| Investments & other assets ^(G) | 19,263,335 | 19,297,701 |
| TOTAL ASSETS | \$ 121,386,352 | \$ 105,792,327 |
| LIABILITIES & NET ASSETS | | |
| LIABILITIES | | |
| Client savings deposits & interest payable on deposits ^(H) | 39,235,605 | 33,257,320 |
| Accounts payable & accrued expenses | 5,602,945 | 4,009,603 |
| Loans payable & interest payable on loans | 15,605,537 | 11,919,118 |
| Other liabilities | 2,190,860 | 471,402 |
| TOTAL LIABILITIES | \$ 62,634,947 | \$ 49,657,443 |
| TOTAL NET ASSETS | \$ 58,751,405 | \$ 56,134,884 |
| TOTAL LIABILITIES & NET ASSETS | \$ 121,386,352 | \$ 105,792,327 |

^(E) The 2024 increase is primarily related to mobile money receivables at SMEP and an increase to loans receivable at HOPE Global Investments.

^(F) Does not include loans receivable by any partner organizations, though HOPE contributes financially to our partners' growth. Net portfolio across the network of microfinance institutions was approximately \$85.1M, an increase of \$7.3M from 2023.

^(G) Includes financial investments held by HOPE programs across the network.

^(H) Consists of client savings at HOPE Congo, Esperanza, SMEP, and Urwego Finance. Across HOPE and partner microfinance institutions and HOPE savings group programs, savings totaled over \$56.5 million.

The consolidated schedules of activities and financial position reported here reflect those of HOPE International only and do not include those of HOPE's partners. Financial statements shown here are unaudited. Audited financials for 2024 (once finalized) and for previous years can be found at hopeinternational.org/about-us/financials.

DISCOVERING HOPE

EXPERIENCE

The Discovering HOPE Experience will help you understand how savings groups empower communities to fight poverty.

Ideal for groups of 6–10 people, this hour-long event features an on-screen facilitator who walks you through each step. You provide the TV and meeting space, and we send a kit with instructions and all the materials you'll need.



BRING THE EXPERIENCE TO YOUR CHURCH OR SMALL GROUP

hopeinternational.org/discovering-hope-experience



227 Granite Run Drive, Suite 250 | Lancaster, PA 17601 | 717.464.3220 | hopeinternational.org

Copyright © 2025 HOPE International. All rights reserved.

Printed on paper certified by the Forest Stewardship Council™ (FSC®) using vegetable-based inks.

